

HPRO HIGH PROFILE MACHINE GUARDS



Receiving Instructions

After delivery, remove the packaging from the product. Inspect the product closely to determine whether it sustained damage during transport. If damage is discovered, record a complete description of it on the bill of lading. If the product is undamaged, discard the packaging.

NOTE: The end-user is solely responsible for confirming that product design, use, and maintenance comply with laws, regulations, codes, and mandatory standards applied where the product is used.

Table of Contents	Page
Signal Words	2
Safety Instructions	2
Specifications	3
Part Numbers & Dimensions	3, 4
Installing the Guard	5
Record of Satisfactory Condition	5
Inspecting and Maintaining the Guard	5
Labeling Diagram	6

SIGNAL WORDS

SIGNAL WORDS appear in this manual to draw the reader's attention to important safety-related messages. The following are signal words used in this manual and their definitions.

⚠ DANGER

Identifies a hazardous situation which, if not avoided, **WILL** result in **DEATH** or **SERIOUS INJURY**. Use of this signal word is limited to the most extreme situations.

⚠ WARNING

Identifies a hazardous situation which, if not avoided, **COULD** result in **DEATH** or **SERIOUS INJURY**.

⚠ CAUTION

Indicates a hazardous situation which, if not avoided, **COULD** result in **MINOR** or **MODERATE** injury.

NOTICE

Identifies practices likely to result in product/property damage, such as operation that might damage the product.

⚠ WARNING

Risks of serious personal injuries or death.

- ***Read and understand the entire manual before installing, inspecting, or servicing the machinery guard. Keep the manual in a location known to all persons who install, inspect, and/or maintain the guard.***
- Read the manual whenever necessary to refresh your understanding of proper use and maintenance procedures.
- DO NOT attempt to resolve any problem(s) with the product unless you are both qualified to do so.
- DO NOT modify the product in any way UNLESS you first obtain written approval from Vestil. Unauthorized modifications automatically void the [LIMITED WARRANTY](#) on p. 7 and might make the product unsafe to use.
- Inspect the product as instructed in the [INSPECTING AND MAINTAINING THE GUARD](#) section on p. 5. DO NOT use this guard unless it is in [SATISFACTORY CONDITION](#) as documented in your [RECORD](#). If your guard requires repairs, DO NOT use the product until it is fully restored to [SATISFACTORY CONDITION](#). See [RECORD OF SATISFACTORY CONDITION](#) on p. 5.
- DO NOT use the product if it cannot be securely anchored to the ground/surface. The guard should not wobble. Relocate the guard if it cannot be securely anchored to the ground/surface at its current location.
- Replace the guard immediately after it sustains damage. NOTE: Damage sustained as a result of the guard's intended/designed use is not covered by the warranty.
- DO NOT use this guard UNLESS all labels are in place, easily readable from a reasonable distance (e.g. not significantly faded), and undamaged. Replace damaged labels as soon as damage occurs. See [LABELING DIAGRAM](#) on p. 6.

NOTICE

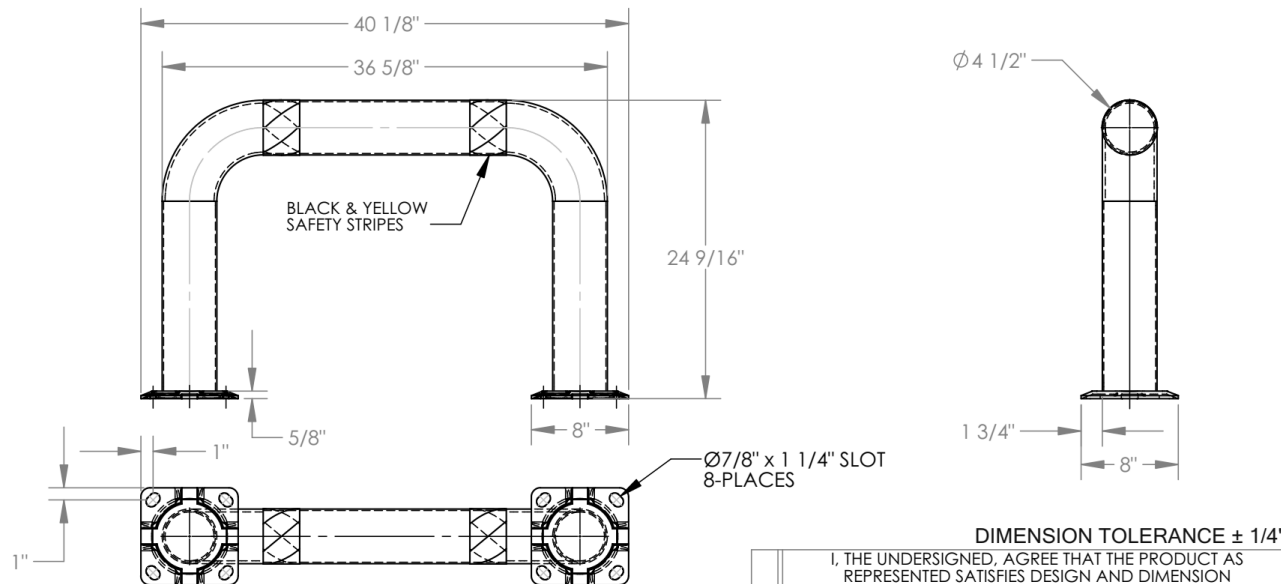
Proper use, maintenance, and storage are essential for this product to last as long as possible.

- Always use this product in accordance with the instructions in this manual and consistent with any training relevant to machines, devices, etc. used in conjunction with this product.
- Routinely inspect and maintain the guard as instructed in [INSPECTING AND MAINTAINING THE GUARD](#) on p. 5.

HIGH PROFILE MACHINERY GUARD - HPRO-36-24-4

APPROX WEIGHT: 51.17 lbs.
DOES NOT INCLUDE WEIGHT OF POWER OR PACKAGING!!!

*** ANY ADDITIONS, DELETIONS, OR OMISSIONS MUST BE CORRECTED ON THIS DRAWING AS THIS DRAWING WILL BE CONSIDERED ALL INCLUSIVE ***
ALL GRAPHICS PROVIDED ARE FOR REFERENCE ONLY. IF CERTAIN DIMENSIONS ARE CRITICAL PLEASE VERIFY THOSE DIMENSIONS WITH YOUR SALESPERSON



STANDARD FEATURES

MODEL NUMBER: HPRO-36-24-4 NONE
MACHINE GUARD HEIGHT: 24 9/16"
MACHINE GUARD LENGTH: 36 5/8"
MACHINE GUARD PIPE DIAMETER: Ø4 1/2"
OVERALL LENGTH IS: 40 1/8"
INCLUDES 2 MOUNTING BRACKETS
TOUGH BAKED IN POWDER COATED YELLOW FINISH
BLACK & YELLOW SAFETY STRIPES
ALL STEEL CONSTRUCTION (ASTM A-36 MIN.)
WITH WELDING TO MEET AWS
WARNING: CHECK APPLICABLE STATE AND
LOCAL LAWS FOR YOUR AREA

SPECIAL FEATURES

NONE

**A
P
P
R
O
V
A
L**

I, THE UNDERSIGNED, AGREE THAT THE PRODUCT AS REPRESENTED SATISFIES DESIGN AND DIMENSION REQUIREMENTS. I ALSO ACKNOWLEDGE MY DUTY TO CONFIRM PRODUCT AND INSTALLATION COMPLIANCE WITH ALL APPLICABLE FEDERAL, STATE AND LOCAL REGULATIONS AND STANDARDS.

ANY MODIFIED UNITS ARE NON-RETURNABLE
☐ As drawn ☐ As marked

Signed: _____ Date: _____

Printed Name: _____

LEAD TIME WILL START UPON RECEIPT OF SIGNED APPROVAL DRAWING

FOR INTERNAL USE ONLY
PROJECT SIGN OFF

SALES	
ENG.	
FAB.	
POWER	

		P.O.#	X
		W.O.#	X
DRAWN BY:	ND	DATE:	6/7/2005
REFERENCE:	X	SCALE:	1:10
QUOTED LEAD TIME:	X	QUOTE #	23-007-053

HPRO SERIES MACHINERY GUARDS: PART NUMBERS & DIMENSIONS

STAINLESS STEEL MODELS	PART NO.	DESCRIPTION
HPRO-SS-36-36-4	23-008-064-001	GUARD FABRICATED FROM 4.5" ROUND STAINLESS STEEL TUBE; 36" LONG X 36" HIGH
HPRO-SS-36-42-4	23-008-116-001	GUARD FABRICATED FROM 4.5" ROUND STAINLESS STEEL TUBE; 36" LONG X 42" HIGH
HPRO-SS-48-36-4	23-008-063-001	GUARD FABRICATED FROM 4.5" ROUND STAINLESS STEEL TUBE; 48" LONG X 36" HIGH
HPRO-SS-48-42-4	23-008-117-001	GUARD FABRICATED FROM 4.5" ROUND STAINLESS STEEL TUBE; 48" LONG X 42" HIGH

HPRO SERIES MACHINERY GUARDS: PART NUMBERS & DIMENSIONS (CONTINUED)

STANDARD MODELS	PART NO.	DESCRIPTION
HPRO-36-24-2	23-008-130	GUARD FABRICATED FROM 1.7" ROUND STEEL TUBE; 36" LONG X 24" HIGH
HPRO-36-24-4	23-008-053	GUARD FABRICATED FROM 4.5" ROUND STEEL TUBE; 36" LONG X 24" HIGH
HPRO-36-36-2	23-008-131	GUARD FABRICATED FROM 1.7" ROUND STEEL TUBE; 36" LONG X 36" HIGH
HPRO-36-36-4	23-008-064	GUARD FABRICATED FROM 4.5" ROUND STEEL TUBE; 36" LONG X 36" HIGH
HPRO-36-42-2	23-008-198	GUARD FABRICATED FROM 1.7" ROUND STEEL TUBE; 36" LONG X 42" HIGH
HPRO-36-42-4	23-008-116	GUARD FABRICATED FROM 4.5" ROUND STEEL TUBE; 36" LONG X 42" HIGH
HPRO-48-24-2	23-008-135	GUARD FABRICATED FROM 1.7" ROUND STEEL TUBE; 48" LONG X 24" HIGH
HPRO-48-24-4	23-008-055	GUARD FABRICATED FROM 4.5" ROUND STEEL TUBE; 48" LONG X 24" HIGH
HPRO-48-36-2	23-008-136	GUARD FABRICATED FROM 1.7" ROUND STEEL TUBE; 48" LONG X 36" HIGH
HPRO-48-36-4	23-008-063	GUARD FABRICATED FROM 4.5" ROUND STEEL TUBE; 48" LONG X 36" HIGH
HPRO-48-42-2	23-008-199	GUARD FABRICATED FROM 1.7" ROUND STEEL TUBE; 48" LONG X 42" HIGH
HPRO-48-42-4	23-008-117	GUARD FABRICATED FROM 4.5" ROUND STEEL TUBE; 48" LONG X 42" HIGH
HPRO-60-42-4	23-008-262	GUARD FABRICATED FROM 4.5" ROUND STEEL TUBE; 60" LONG X 42" HIGH
HPRO-72-42-4	23-008-269	GUARD FABRICATED FROM 4.5" ROUND STEEL TUBE; 72" LONG X 42" HIGH

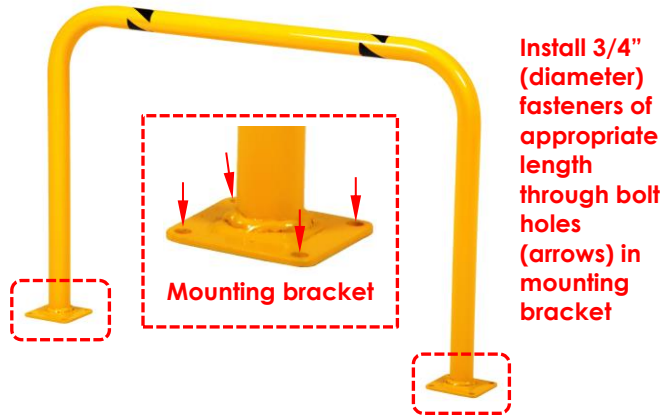
MODELS MADE FROM SQUARE TUBE	PART NO.	DESCRIPTION
HPRO-SQ-36-24-5	23-008-730	GUARD FABRICATED FROM 5" SQUARE STEEL TUBE; 36" LONG X 24" HIGH
HPRO-SQ-36-36-5	23-008-731	GUARD FABRICATED FROM 5" SQUARE STEEL TUBE; 36" LONG X 36" HIGH
HPRO-SQ-36-42-5	23-008-732	GUARD FABRICATED FROM 5" SQUARE STEEL TUBE; 36" LONG X 42" HIGH
HPRO-SQ-48-24-5	23-008-733	GUARD FABRICATED FROM 5" SQUARE STEEL TUBE; 48" LONG X 24" HIGH
HPRO-SQ-48-36-5	23-008-734	GUARD FABRICATED FROM 5" SQUARE STEEL TUBE; 48" LONG X 36" HIGH
HPRO-SQ-48-42-5	23-008-735	GUARD FABRICATED FROM 5" SQUARE STEEL TUBE; 48" LONG X 42" HIGH

INSTALLING THE GUARD

Each machinery guard includes 2 mounting plates for attaching the guard to a surface. There are 4 bolt slots in each mounting bracket that are sized for receiving 3/4" (diameter) hardware. Your building engineer should determine the necessary length of the anchor bolts—or other selected fastener—used to attach the guard to the selected surface.

To install the guard:

- 1) Begin by setting the machinery guard in position at the installation site.
- 2) Mark the concrete with the locations of all 4 bolt holes in each **mounting bracket**. See arrows () in diagram.
- 3) Drill holes where the surface is marked using an appropriately-sized drill bit. Drill to the depth specified in the installation instructions for your fasteners. If applicable, set anchors in the drilled holes.
- 4) Set the guard in place, i.e. align bolt holes in the mounting plates with the holes you just drilled into the surface.
- 5) Install fasteners (e.g. anchor bolts) through the bolt holes in the mounting plate and tighten them.



RECORD OF SATISFACTORY CONDITION (the “RECORD”)

After installing the guard, make a record of its appearance. Take videos and/or photos of the guard, both mounting plates, anchoring hardware and the anchoring surface around the guard, and of each label. Collect your photos and/or videos and all annotations in a file. ***This file is a record of the guard in satisfactory condition.***

INSPECTING AND MAINTAINING THE GUARD

Compare your observations to your [RECORD](#) to determine whether the guard is in satisfactory condition. Remove the guard from service unless it is in satisfactory condition. Cosmetic changes, like recently damaged paint/powder coat, are not changes from satisfactory condition. However, touchup paint must be applied to all affected areas as soon as damage occurs. Exposed metal rusts and rust could eventually compromise the integrity of the metal. Contact [TECHNICAL SERVICE](#) to order replacement parts. Contact information appears on the cover page of this instruction manual.

At least once per month:

1. Check the surface of the product for dirt or other matter. **Clean the bollard** with a mild soap and water solution.
2. Examine **fasteners/anchoring hardware**. Replace damaged, worn, or corroded hardware. Confirm that the guard is solidly anchored to the ground (concrete) or other installation surface. If the guard wobbles, tighten loose fasteners. Install the guard in another location if wobble cannot be eliminated in the current location. At the new installation site, apply the [INSTALLING THE GUARD](#) instructions on p. 5 (above).
3. Check all labels. Replace labels that are missing, damaged, and/or not easily readable from a reasonable distance. See [LABELING DIAGRAM](#) on p. 6.
4. Examine the whole structure for significant rusting, metal erosion, rot, etc. If rusting is purely superficial, remove it with a metal bristle brush or steel wool. Clean the affected area with a mild soap and water solution, allow it to dry, and then apply touchup paint. Contact the [TECHNICAL SERVICE](#) department to discuss any questions you have regarding the condition of your guard.

LABELING DIAGRAM

Label content and location are subject to change so your product might not be labeled exactly as shown. Compare the diagram below with your [RECORD](#). If you have any questions about how your bollard is labeled, contact the [TECHNICAL SERVICE](#) department. Replace all labels that are damaged, missing, or not easily readable (e.g. faded).

